

Accessories products

CAEN Short Form Catalog 2007

Function	Model	Description	Page
HS CAENET Controller	A250	High Speed CAENET Manual Controller	77
HS CAENET Controller	A1303	High Speed CAENET PCI Controller	77
Controller	A1500	ARM Based General Purpose OEM Single Board Computer	77
Controller	A2818	PCI CONET Controller	78
Adapter	A293	CAMAC to NIM Power Adapter	78
Adapter	A385	16 Channel Flat-to-LEMO Cable Adapter for V785	78
Adapter	A392	16 Channel Flat-to-LEMO Cable Adapter for V792	78
Adapter	A967	32 Channel Cable Adapter for V767, V862, V1190, VX1190, V1495	79
Adapter	A992	16 Channel Impedance Adapter	79
Attenuator	A309	Single Channel 1 dB Attenuator	79
Attenuator	A310	Single Channel 3 dB Attenuator	79
Attenuator	A311	Single Channel 6 dB Attenuator	79
Attenuator	A312	Single Channel 12 dB Attenuator	79
Attenuator	A313	Single Channel 20 dB Attenuator	79
Splitter	A315	Splitter	80
HV Filter	A483	HV Bidirectional Passive Filter	80

OUT: 5VDC
1600mA

A250 High Speed CAENET Manual Controller



Overview

The Mod. A250 is a hand-held unit to monitor and control various CAEN modules via the HS CAENET serial link and protocol (1 MByte/s). Up to 99 daisy chained modules of different types can be controlled by a single Manual Controller. The protocol features simple yet effective programming and monitoring sequences. The A250 is particularly suited for setting up experiments, or laboratory tests. Settings are entered via a keypad and monitored via an alphanumeric LCD. Self explanatory messages are provided and errors are flagged in case of unsuccessful operations or out-of-range parameters selection.

Ordering options

Code	Description
WA250XAAAAA	A250 - High Speed CAENET Manual Controller

A1303 High Speed CAENET PCI Controller



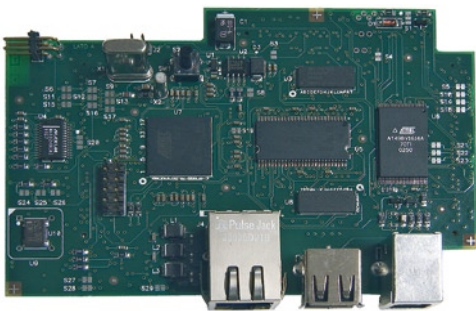
Overview

The Mod. A1303 is a 32-bit 33 MHz PCI card, which allows the control of a HS CAENET network through a standard PC. The communication path uses a simple 50 Ohm coaxial cable as its physical transmission line. The card drivers, together with C functions libraries, demo programs and diagnostic utilities are provided for both Windows and Linux Users.

Ordering options

Code	Description
WA1303XAAAA	A1303 - High Speed CAENET PC Controller (PCI Bus)

A1500 ARM Based General Purpose OEM Single Board Computer



Overview

The Mod. A1500 is a single board computer, suitable to a wide variety of product design and development tasks, whose core is the Atmel AT91RM9200 Microprocessor which provides excellent performance with low power consumption. These features, combined with the on-chip I²C, 5USART, 3SSC, USB Device, USB Host, Smart Media, 10/100 Ethernet, SPI and Compact Flash interfaces, allow the AT91RM9200 to form the basis of low-cost, high performance products for industrial automation, telematics, medical applications and many others. The AT91RM9200 Address and Data Bus as well as all GPIO are available via three 100-pin connectors.

Ordering options

Code	Description
WA1500XAAAA	A1500 - General Purpose Single Board CPU
WA751XAAAAA	A751 - Develop board for A1500

A2818 PCI CONet Controller**Overview**

The Mod. A2818 is a 32-bit 33 MHz PCI card, which allows the control, through a standard PC, of the CONet (the network of up to eight daisy chained V2718/VX2718 VME-PCI Bridges or V1721/V1724 Digitizers). The communication path uses optical fiber cables as physical transmission line (AY2705, AY2720, AI2705, AI2720). The card drivers, together with C functions libraries and demo programs are provided for both Windows and Linux Users.

Ordering options

Code	Description
WA2818XAAAA	A2818 - PCI Optical Link
WAY2705XAAAA	AY2705 - Optical Fibre 5m duplex
WAY2720XAAAA	AY2720 - Optical Fibre 20m duplex
WAI2705XAAAA	AI2705 - Optical Fibre 5m simplex
WAI2720XAAAA	AI2720 - Optical Fibre 20m simplex

A293 CAMAC to NIM Power Adapter**Overview**

The Mod. A293 allows the insertion of NIM modules inside a CAMAC crate by using the power lines of the CAMAC standard Dataway. The required ± 12 V power lines are obtained from the standard ± 24 V by means of independent voltage regulators.

Ordering options

Code	Description
WA293XAAAAA	A293 - CAMAC to NIM Power Adapter

A385 - A392 16 Channel LEMO Adapters**Overview**

The Mod. A385 and A392 allows to provide respectively the V785 and the V792, with LEMO 00 input connectors, adapting them to the flat connectors. The models A385 and A392 fit into one 17+17 pin male flat type connector and are provided with 16 LEMO 00 male connectors each. The Mod. A385 can also be used to match the output flat connectors of the Mod. N568B/LC Spectroscopy Amplifier with the LEMO input connectors of a discriminator (such as V812, V895 etc.). The devices are completely passive mechanical adapters for analog signals and feature 50 cm long cables.

Ordering options

Code	Description
WA385XAAAAA	A385 - 16 Channel Cable Adapter (Flat to Lemo) for V785, 50cm $\pm 10\%$ cables
WA392XAAAAA	A392 - 16 Channel Cable Adapter (Flat to Lemo) for V792, 50cm $\pm 10\%$ cables

A967 32 Channel Cable Adapter for V767, V862, V1190, VX1190, V1495**Overview**

The Model A967 allows to adapt one Robinson Nugent high density flat connector (used on V862, V767, V767A, V1190A/B, VX1190A/B and V1495) into two 17+17-pin Header-type male connectors with locks through two 25 cm long flat cables.

Ordering options

Code	Description
WA967XAAAAAA	A967 - 32 Channel Cable Adapter (1x32 to 2x16) for V767, V862, V1190, VX1190, V1495

A992 16 Channel Impedance Adapter**Overview**

The Mod. A992 is a plug-in card, provided with 16 independent input channels on a 34 pin male header connector, to be inserted into the Mod. V792 QDC's front panel connectors (one V792 requires two A992 adapters). The card matches the QDC's input impedance from 50 Ohm to 110 Ohm, decouples the QDC's and the source's ground and converts differential signals into single ended signals.

Ordering options

Code	Description
WA992XAAAAAA	A992 - 16 Channel Impedance Adapter for V792

A309 - A310 - A311 - A312 - A313**Single Channel Fixed Attenuators****Overview**

The Mod. A309, A310, A311, A312 and A313 are simple devices that provide a fixed attenuation (1, 3, 6, 12 and 20 dB respectively). The attenuators are 50 Ohm adapted and feature LEMO female type connectors; they do not require any power supply since they are made up of resistive cells.

Ordering options

Code	Description
WA309XAAAAAA	A309 - Single Channel Fixed Attenuator (1dB)
WA310XAAAAAA	A310 - Single Channel Fixed Attenuator (3dB)
WA311XAAAAAA	A311 - Single Channel Fixed Attenuator (6dB)
WA312XAAAAAA	A312 - Single Channel Fixed Attenuator (12dB)
WA313XAAAAAA	A313 - Single Channel Fixed Attenuator (20dB)

A483 HV Bidirectional Passive HV Filter**Overview**

The Mod. A483 is a bidirectional passive HV filter. The filter has a Maximum Input Voltage of ± 8 kV. The Ripple Rejection is 20 dB (26 dB @ 36 KHz), measured with 50 mVpp (40 mVpp @ 36 KHz) input ripple, 8 kV Input DC Voltage and 8 μ A Output Current.

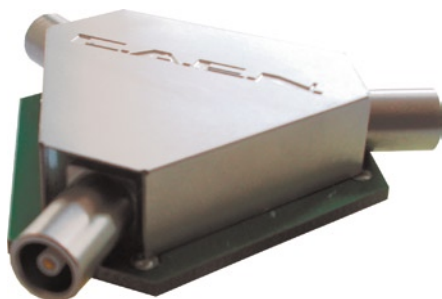
It does not require any power supply since it is made up of passive components.

The module is designed to be used together with a HV Power Supply when a low ripple is required (E.G. for Ge-detector applications).

The High Voltage input and output are provided by SHV connectors.

Ordering options

Code	Description
WA483XAAAAAA	A483 - HV Filter (8KV)

A315 Splitter**Overview**

The Mod. A315 splits one input on two output signals. All the connectors are LEMO female type. The splitter is adapted for 50 Ohm lines.

The device is completely passive (no power supply is required); the amplitude on each output is one half of that on the input.

Ordering options

Code	Description
WA315XAAAAAA	A315 - Splitter